



# ThinkHub™

**IDEATE. COLLABORATE. INNOVATE.**

Discover the powerful collaboration software that is transforming the way people communicate. ThinkHub is a digitalized, multitouch collaboration tool that consolidates all the moving pieces of teamwork: the devices, applications, people, ideas, and content that are critical to achieving great work.

**Do great things with ThinkHub.**

**ThinkHub™**  
**BYOD**  
**COLLABORATION**  
**SOFTWARE**

**ViewHub™**  
**BYOD**  
**PRESENTATION**  
**SOFTWARE**

**AirConnect™**  
**BYOD**  
**CONNECTION**  
**SOFTWARE**

# HOW ARE PEOPLE USING THINKHUB SOLUTIONS?



**BRAINSTORMING AND IDEATION SESSIONS**



**REMOTE COLLABORATION AND WORKING SESSIONS**



**PRESENTATION CREATION AND DELIVERY**



**INTERACTIVE VIDEOCONFERENCING**



**STRATEGIC PLANNING**



**DATA VISUALIZATION**



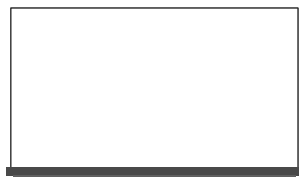
**PROJECT MANAGEMENT**



**PROTOTYPING**

## ONE TOTAL SOLUTION TO SIMPLIFY ALL SYSTEMS

ThinkHub is a software-based solution that has the power to replace all the hardware that we associate collaboration systems with today.



Whiteboard



Video Conferencing systems

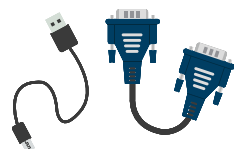


Remote Conferencing

=



Digital Screens



Device Input Cables



## DIGITAL CANVAS

- Expands 20x the surface area of the physical touchscreen
- Grid and Canvas Key provide visual cues to help you navigate the digital space
- Draw directly on the Canvas for digital whiteboarding sessions
- Pinch-zoom to visualize or focus on specific content

## UNLIMITED CONTENT AND DEVICES

- No cap on the amount of content or number of devices that you can share to the ThinkHub Canvas
- Share and upload content from a USB on-the-fly, or select from network drive and/or cloud server
- Drag and drop, pinch-zoom content and device windows
- Supports all iOS, OS, Windows, Android, and Linux device sharing
- Supports TIV TouchControl™ - control devices from the ThinkHub Canvas

## BUILT-IN COLLABORATION TOOLSET

ThinkHub is designed to work with the many ways you think and collaborate. That's why we've created different tools to support different kinds of thinking and collaborating.



### Annotation Toolset

Annotation tools are available for all content shared to the ThinkHub Canvas. This includes images, videos, PDFs, devices, Notes, Sketches, and Web Browser windows. You can even annotate the ThinkHub Canvas itself. You'll have the ability to draw, erase, snapshot, email, and/or print out content on the ThinkHub Canvas.



### Notes

Tap to type information. Change background colors to categorize content/information.



### Sketches

Tap to draw or sketch freehand. Select pen color and weight.

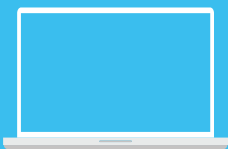


### Multitouch Web Browser

Supports multitouch web sites, open multiple browser windows at the same time, with access to full annotation toolset.

Studies indicate that the average employee saves **81 minutes per week using his/her own device.**

Source: Inc. Magazine

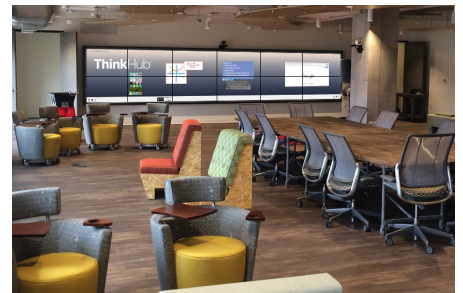


## BYOD

- › Unlimited number of devices can connect to ThinkHub's digital canvas wirelessly + simultaneously
- › No external hardware required for ThinkHub device sharing
- › All of these operating systems can also be connected through hardline inputs

## SCALABILITY + FLEXIBILITY

- ThinkHub solutions are highly scalable to fit environments ranging from small (four to six person) huddle spaces to 50+ seated demonstration / large presentation rooms.
- ThinkHub solutions range from a single panel 55" touchscreen up to a 24' wide wall.
  - › Classrooms
  - › Boardrooms
  - › Design centers
  - › Innovation labs
  - › Corporate offices
  - › Demo centers
  - › Medical offices
  - › Training centers
  - › Operating rooms
  - › Corporate lobbies
  - › Team spaces
  - › Executive offices
  - › Briefing centers
  - › Community spaces
  - › Libraries
  - › Huddle spaces
  - › Research centers



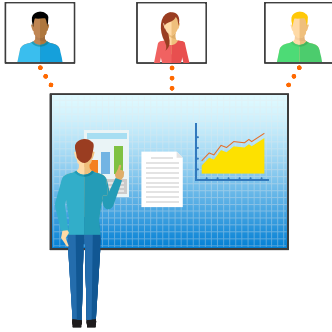
## EFFICIENCY + PRODUCTIVITY

- Large digital Canvas to showcase images, videos, presentations in one place
- Select and upload content from a USB, network drive and/or cloud server
- Wireless device sharing across an unlimited number of Mac, iOS, Windows, Android, and Linux devices
- Annotation tools to make quick edits and share with the team (including ability to annotate on live streams)
- Digital whiteboarding capabilities
- Data persistence - save Sessions to resume at a later date (all data will be stored as you saved it)





## THINKHUB MULTISITE



For remote collaboration sessions from ThinkHub device to ThinkHub device.

- Real-time, remote collaboration Sessions
- Session sharing across the entire organization
- Shared network folders and content
- Any site can utilize any display configuration
- Two MultiSite Network options:
  - ▶ MultiSite Enterprise
    - Uses client network only
    - Includes server within client firewall
  - ▶ MultiSite SMB
    - Utilizes T1V cloud-based server
    - T1V handles relay support
    - Support for multiple networks
- Supports up to 10 ThinkHub MultiSite locations

## ADDITIONAL OPTIONS

These additional options are available upon request\*:

- Dynamically configurable workspace that can be customized for multiple use cases, with multiple content windows
- Hardline inputs: up to 4 per ThinkHub device
- ADA support
- Multilingual capabilities
- Cloud-based storage
- Crestron / AMX Control Configuration
- Meeting Room Analytics (see page 10)

\*additional fees may apply

## THINKHUB VIDEOCONFERENCING



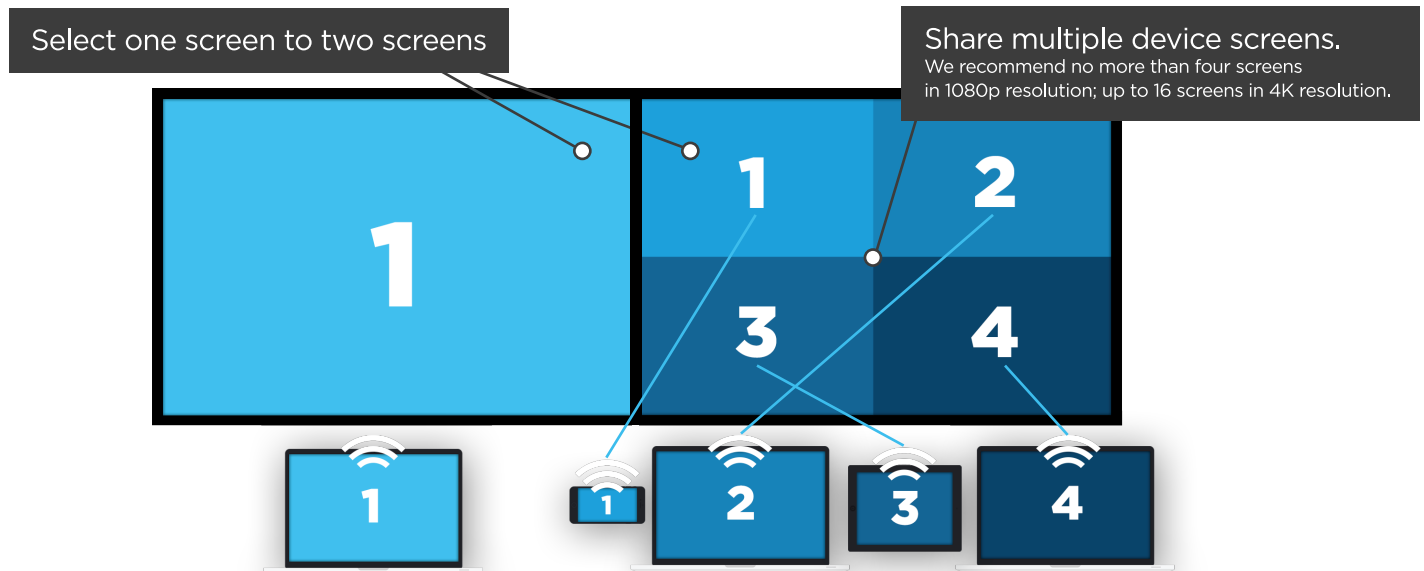
Videoconferencing for ThinkHub is designed to work with the systems you already have in place.

- Compatible with all hardware-based videoconferencing equipment, such as Cisco, Polycom, etc...
- One-time setup and configuration fee
- VC Add-On is available for ThinkHub and ThinkHub MultiSite
- Option for built-in videoconferencing technology, which works via the T1V AirConnect App, and supports any web-based VC apps your team uses

## SOFTWARE AS A SERVICE

- ThinkHub has an annual license and support fee. ThinkHub does not charge per user; licenses are available by ThinkHub device
- ThinkHub offers a range of storage options: local, embedded hard drive, enterprise network or cloud
- Software that is compatible with top touchscreen manufacturers
- T1V Support comes with all ThinkHub solutions
  - ▶ Phone and Email support 8am - 10pm EST, M-F (additional support available after hours and on weekends)
  - ▶ 24/7 Remote Monitoring
  - ▶ Free upgrades to licensed software





## WHAT IS VIEWHUB?

ViewHub enables users to share content wirelessly from device screens onto a single display for seamless group meetings. There are multiple configurations available based on your needs, with the option to connect hardline inputs for facilities with strict security requirements.

ViewHub is BYOD-friendly - meaning your team can tap into the power of ViewHub from any device in the room (laptops, tablets, smartphones, you name it...).

ViewHub is ideal for presentations, or meetings that require teams to view multiple pieces of content at once.

## HOW DOES IT WORK?

Connect to ViewHub directly from your device - the software will automatically display your device screen to the shared display. Depending on the number of devices connected at the same time, ViewHub will reconfigure the screen to allow viewers to see the device screen of every connected device. If just a single device is connected to ViewHub, that device will take up the entire screen.

So instead of hovering around an individual screen or switching the view of a shared screen, ViewHub allows you to see everything, all at once.

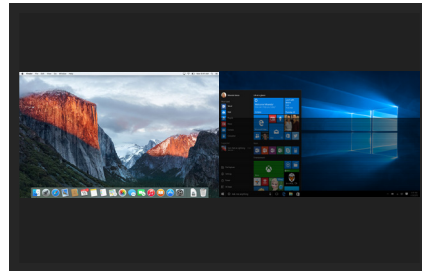
To remove your device screen, simply disconnect from ViewHub on your own device.

## HOW MANY DEVICES CAN I CONNECT TO VIEWHUB?

We recommend no more than four screens in 1080p resolution; up to 16 screens in 4K resolution. However, depending on your hardware requirements, we can expand the number of available connections based on your needs.



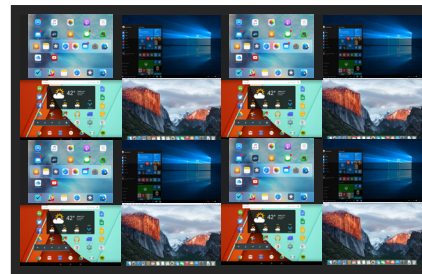
One Device



Two Devices



Four Devices



Sixteen Devices

## WHAT SCREEN SIZE CAN I USE TO RUN VIEWHUB?

ViewHub is available in all shapes and sizes: we offer a great deal of flexibility in this regard. Choose from one of our standard sizes (32", 40", 46", 55", 80" 84", 3-Panel, 6-Panel) or work with us to customize the solution that's right for your space. Larger, custom sizes are also available.

## VIEWHUB QUICK FACTS

- Screen mirroring / presentation solution
- AirConnect app for Windows, Mac, iOS, Android, Linux (same app to connect to ThinkHub)
- Supports AirPlay on any network
- Access and Authentication Control
- Integrates with AV Control Panels
- Centralized Management Console via TIV CMS
- Supports four simultaneous device streams at 1080p at 30fps
- Supports sixteen simultaneous device streams at 4K resolution at 30fps
- Application Window Sharing
- Unlimited Multi-Screen Support

AirConnect is a mobile application that enables wireless device sharing to ThinkHub or ViewHub from a user's laptop, tablet, or smartphone. This is a mirroring technology that allows the user to share anything on their screen to a window on the ThinkHub Canvas, or directly to ViewHub.

- Supports Mac OS, iOS, Windows, Android, and Linux devices
- ThinkHub and laptops can be on different subnets within your network
- For wireless screen mirroring, one ThinkHub can receive multiple connections using a single name
- Available for free download to all ThinkHub / ViewHub customers



## AIRCONNECT FEATURES + BENEFITS

---

### **TouchControl™**

Available through TIV's AirConnect app, TIV TouchControl provides users the ability to control Windows, Mac, and Android laptops from the ThinkHub touchscreen. These devices can be connected wirelessly or with hardline inputs.

### **AirConnect View™**

Allows users to view the ThinkHub Canvas or ViewHub Display. Useful when a remote user is participating in a ThinkHub/ViewHub Session and wants to view the ThinkHub Canvas/ViewHub Display.

### **AirConnect VC™**

Allows users to videoconference with active ThinkHub/ViewHub Sessions. When the user selects the 'VC' button within the AirConnect App, the user will appear on the ThinkHub Canvas within a device window. User will still have view access to ThinkHub Canvas.

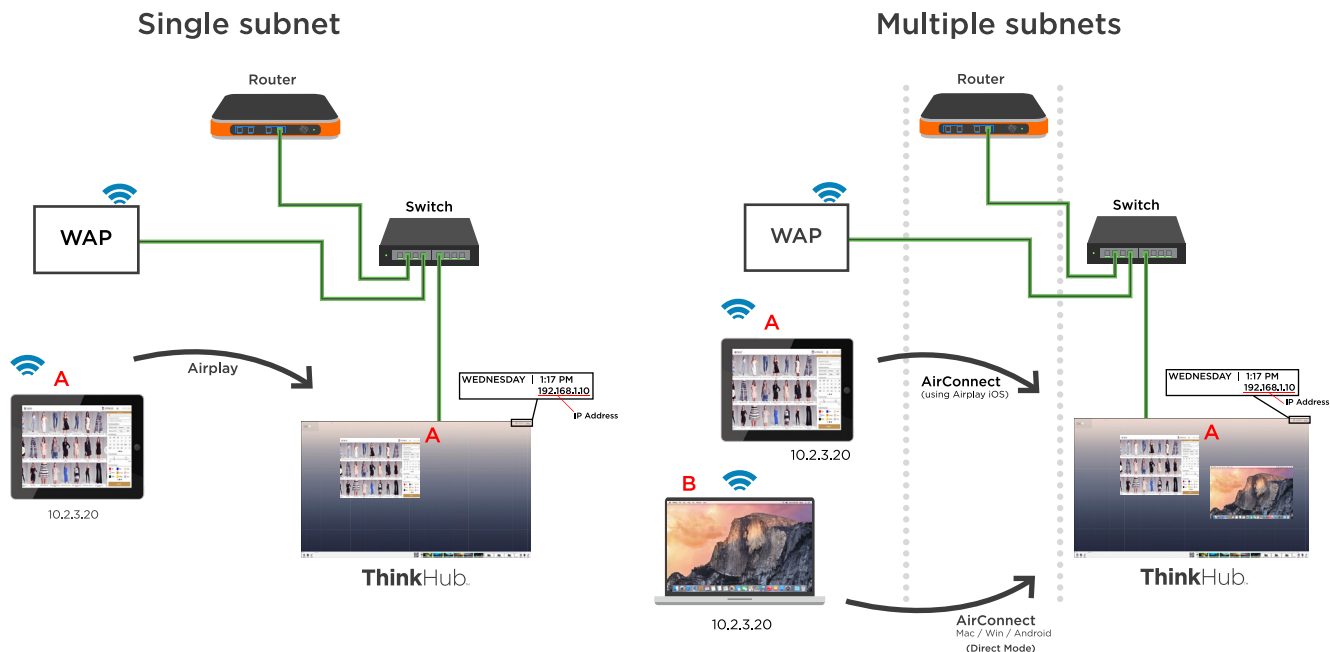
### **AirConnect Files™**

Provides users the ability to move files directly between the ThinkHub Canvas and laptops / mobile devices. Users will also be able to save the ThinkHub Session directly to their laptop or mobile device. This will allow a user to securely carry their ThinkHub Session with them and resume the Session on a different ThinkHub device without using a network/cloud file server.



## DIRECT MODE

- Compatible with a single subnet and/or multiple subnets
- Use **Direct Mode** if...
  - › the ThinkHub/ViewHub device and all user devices are on the same network



## WORLD MODE

- Developed for environments where Direct Mode is not possible (due to network architecture or security constraints)
- Use **World Mode** if...
  - › ThinkHub is on the corporate network but you want to allow users on the corporate guest network to mirror their screen to the ThinkHub/ViewHub device.
  - › ThinkHub/ViewHub is on your internal corporate network and a laptop user wants to mirror their screen from outside your network - AirConnect supports this capability from anywhere in the world, even from a cellular network.
  - › ThinkHub/ViewHub is located on a separate isolated VLAN and employees want to mirror their laptop from the corporate network (even remote users working from home).

# MEETING ROOM ANALYTICS

Track activity in your meeting rooms and discover where your team is most productive. This cloud-based reporting module enables you to gather insights on ThinkHub and ViewHub usage, including peak hours, device connectivity, and more. Your dashboard will collect metrics on what matters to you most and give you the ability to create reporting on your organization's meeting room activity.

MEETING ROOM METRIC	ThinkHub™	ViewHub™
Total Available Rooms by Day/Week	✓	✓
Total Active Rooms by Day/Week	✓	✓
System Active Hours by Room/Day/Week	✓	✓
Most/Least Used Rooms	✓	✓
Device Connectivity - number/type of devices used by Room/Day/Week	✓	✓
Average System Active Hours per Meeting Session	✓	✓
Average System Touches per Meeting Session	✓	✗
Built-in App Usage (Note, Sketch, Web Browser)	✓	✗
Total ThinkHub Canvases Created by Day/Week/Month	✓	✗
Total ThinkHub Canvases Saved by Day/Week/Month	✓	✗
Total ThinkHub Canvases Emailed by Day/Week/Month	✓	✗

# SPECIFICATIONS

## COMPUTER (SOFTWARE ONLY)

## THINKHUB / VIEWHUB SINGLE PANEL, 1080p

## THINKHUB / VIEWHUB MULTIPANEL, 4K

### SKU

THINKHUB: CX-02-TH  
VIEWHUB: CX-01-VH

THINKHUB: CX-03-THP  
VIEWHUB: CX-03-VH

### Target Applications

Room Types	Conference Room Classrooms Board Rooms Training Rooms Demo Centers Huddle Spaces Libraries Executive Offices	Conference Rooms Classrooms Board Rooms Training Rooms Demo Centers Huddle Spaces Libraries Executive Offices	Executive Offices Innovation Labs Corporate Lobbies Briefing Centers Design Centers Research Centers
Room Size	Small to Medium (3-12 people)	Small to Large (3-25+ people)	

### Display Requirements

Display Resolution (W x H)	1920p x 1080 pixels	3840 x 2160 pixels
Display Size	Single panel touchscreen	Single panel 4K or up to 3-panel 1080p

### ThinkHub Device

Dimensions (W x H x D)	7.7 in x 1.4 in x 7.7 in 19.7 cm x 3.6 cm x 19.7 cm	9.9 in x 6.6 in 25.1 cm x 16.8 cm
Weight	2.6 lbs	11 lbs
Resolution	1920x1080 @ 60Hz	1 x 3840x2160 @ 60Hz 3 x 3840x2160 @ 30Hz 6 x 1080x1920 @ 60Hz 12 x 1080x1920 @ 30Hz

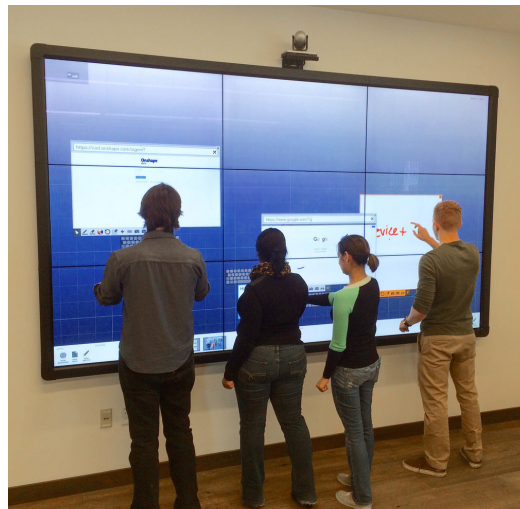
Storage / RAM	TH 1TB / 8GB / VH 500GB / 4GB	256GB / 12GB
Processor	TH 2.6 GHz dual-core Intel Core i5 / VH 1.4 GHz	3.7 GHz Quad Core Intel Xeon E5
Graphics	TH Intel Iris Graphics / VH Intel HD Graphics 5000	Dual AMD FirePro D300
Network	Wired 1Gbps Optional Wi-Fi / 802.11ac/802.11 a/b/g/n	Wired 1Gbps Optional Wi-Fi / 802.11ac/802.11 a/b/g/n
Built-in Protocol	AirPlay and TIV AirConnect	AirPlay and TIV AirConnect
I/O*	(4) USB 3.0 (1) Ethernet 1000 Base-T (2) MiniDisplayPort Video Output (1) Optional HDMI Video Output* 3.5mm Stereo Out 3.5mm Stereo In (2) Optional Hardline Inputs**	(4) USB 3.0 (2) Ethernet 1000 Base-T (6) MiniDisplayPort Video Output (1) optional HDMI Video Output* 3.5mm Stereo Out 3.5mm Stereo In (4) Optional Hardline Inputs***
* Option will replace 1 MiniDisplayPort. ** Up to 2 hardline inputs, HDMI or DVI. *** Up to 4 hardline inputs, HDMI or DVI. Inputs accept live source inputs at 720p @ 30 Hz and 1080p @ 30 Hz, such as laptops, tablets, and mobile devices; supports audio. Each Hardline will use 1 USB Port.		
Hardware Warranty	1 Year	1 Year

### BYOD Connectivity

<b>AirPlay</b>	Supports unlimited number of devices on Mac / iOS Platforms	Supports unlimited number of devices on Mac / iOS Platforms
Recommended bandwidth per live stream	typical: 300 kb/s max: 11 mb/s	typical: 300 kb/s max: 11 mb/s
Streaming Media	Stream 1080p at 30fps w/synchronized audio (iOS)	Stream 1080p at 30fps w/synchronized audio (iOS)
<b>TIV AirConnect App</b>	Supports unlimited number of devices on Mac, iOS, Windows, Android, Linux Platforms	Supports unlimited number of devices on Mac, iOS, Windows, Android, Linux Platforms
Recommended bandwidth per live stream	typical: 300 kb/s max: 3 mb/s	typical: 300 kb/s max: 3 mb/s
Streaming Media	Stream 1080p at 30fps w/synchronized audio (Mac OS, Windows)	Stream 1080p at 30fps w/synchronized audio (Mac OS, Windows)
Wireless Device Connectivity	No dongle needed; toggle between users via App	No dongle needed; toggle between users via App
Network Modes	<b>Direct Mode:</b> Compatible with a single subnet and or multiple subnets <b>World Mode:</b> Developed for environments where Direct Mode is not possible (due to Network Architecture or security restraints)	<b>Direct Mode:</b> Compatible with a single subnet and or multiple subnets <b>World Mode:</b> Developed for environments where Direct Mode is not possible (due to Network Architecture or security restraints)

### ThinkHub MultiSite Add-On Options (Only Available for CX-03-THP)

MultiSite Control Method	<b>MultiSite SMB</b>	<b>MultiSite Enterprise</b>
MultiSite Live Streaming Method	TIV Control Cloud	On-Premise MultiSite Server
Network Requirement	TIV Streaming Relay Cloud Specific outbound ports required; contact TIV for details	Direct (ThinkHub to ThinkHub) Specific outbound ports required; contact TIV for details
Recommended bandwidth per live stream	typical: 300 kb/s max: 3 mb/s	typical: 300 kb/s max: 3 mb/s



**T1V**  
t1v.com

for more information and pricing on T1V products, please contact

**VUCANVAS**

info@vucanvas.com    www.vucanvas.com

©2016 T1V, Inc. All Rights Reserved.

T1V's proprietary software is covered by multiple patents and patents pending including US Patents 8,522,153, 8,583,491, and 8,600,816.