

**yodeck**

# What is Yodeck

- Digital Signage on the Cloud
  - Manage what gets displayed on public screens (+ how/when)
  - Super-Easy Central Management Dashboard
  - Player Connected to Each Monitor
  - Software as a Service: Monthly/Annual Fee per Monitor
  - Sign up for a Free Account (up to 1 Monitor)
- FREE Hardware (Annual Subscriptions only)
- Show layouts of Videos, Images, Audio, Documents, YouTube, Web, Live Streams, RSS Tickers, Widgets + More Features Coming

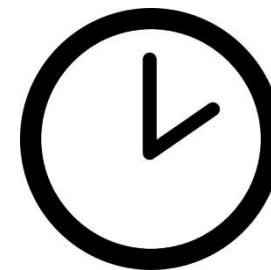
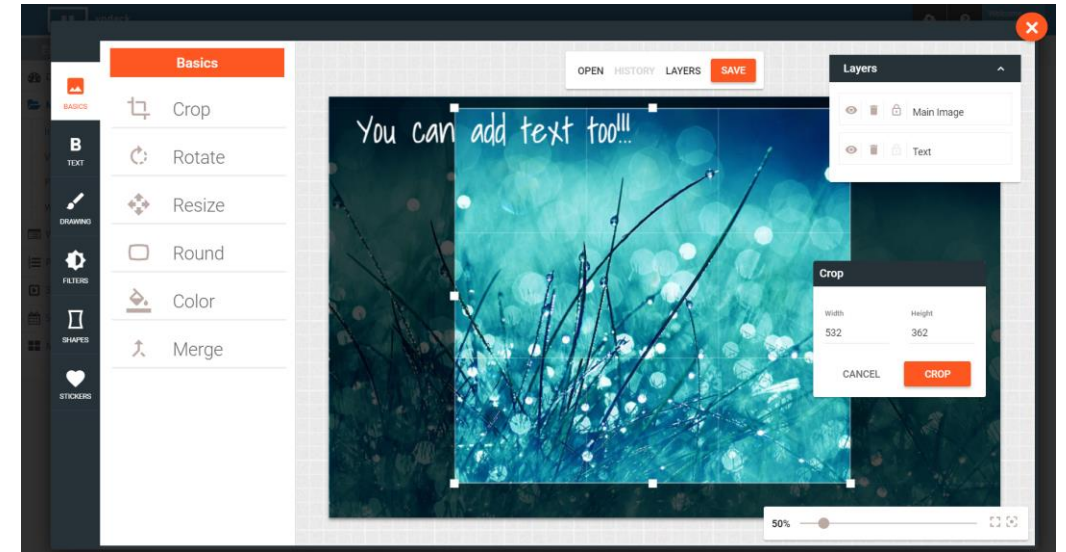
## Features

- Manage Media
  - Videos / Images / Audio
  - PowerPoints
  - Documents (PDF, MS-Office)
  - YouTube Videos (stored locally)
  - Streaming from YouTube Live, Ustream, IP streamers
  - HDMI-in Support
  - Use URL's with web content
  - "Folder Views" for 100s of files
  - Media Tags for easy filing



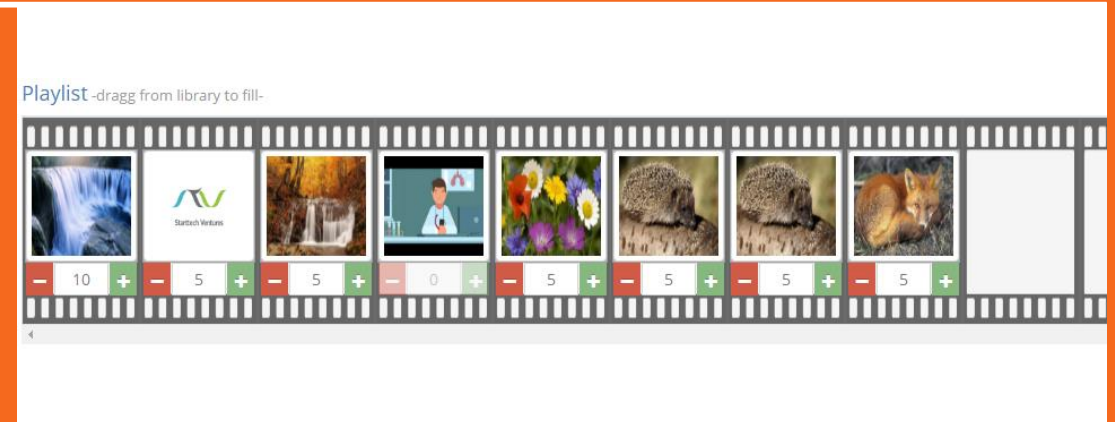
## Features

- Edit Images with Layers
  - Edit online all Images uploaded
  - Crop, Rotate, Filters, and more
  - Add Text, Cliparts, other pics
  - Saves all Layers, editable later
- Widgets
  - Super-smooth RSS tickers
  - Text overlays, weather, clocks, social walls + more coming
- Custom Widgets: freely develop and upload your own code



## Features

- Playlists
  - Add any Media/Widget
  - Define duration per item
  - Seamless transitions
  - "Folder View" for 100s of entries
- Tag-based Playlists
  - Assign Media with Tags
  - Create dynamic Playlists using combinations of Media Tags
- Sub-Playlists
  - Add Playlists to another Playlist



The image shows a configuration form for a playlist. The fields are:

- Name: Med Videos
- Description: Dynamic Playlist with medical-related videos
- Add black gap between videos: OFF
- Filter Workspaces: x United States, x Mexico
- Include Media with Tags: animations x, & medical x, Tags
- or: doctor x, Tags
- Or
- Exclude Media with Tags: tst-a x, Tags

# Features

- Create Shows (Layouts)
  - Drag-and-Drop Visual Editor
  - Setup areas playing Playlists
  - Enable transparency per area and use overlays
  - Support any screen aspect ratio, or orientation (portrait)
  - Option to "fit", "crop" or "stretch" content to exactly match your layout.
  - Assign background audio playlist



Layering (drag to sort)

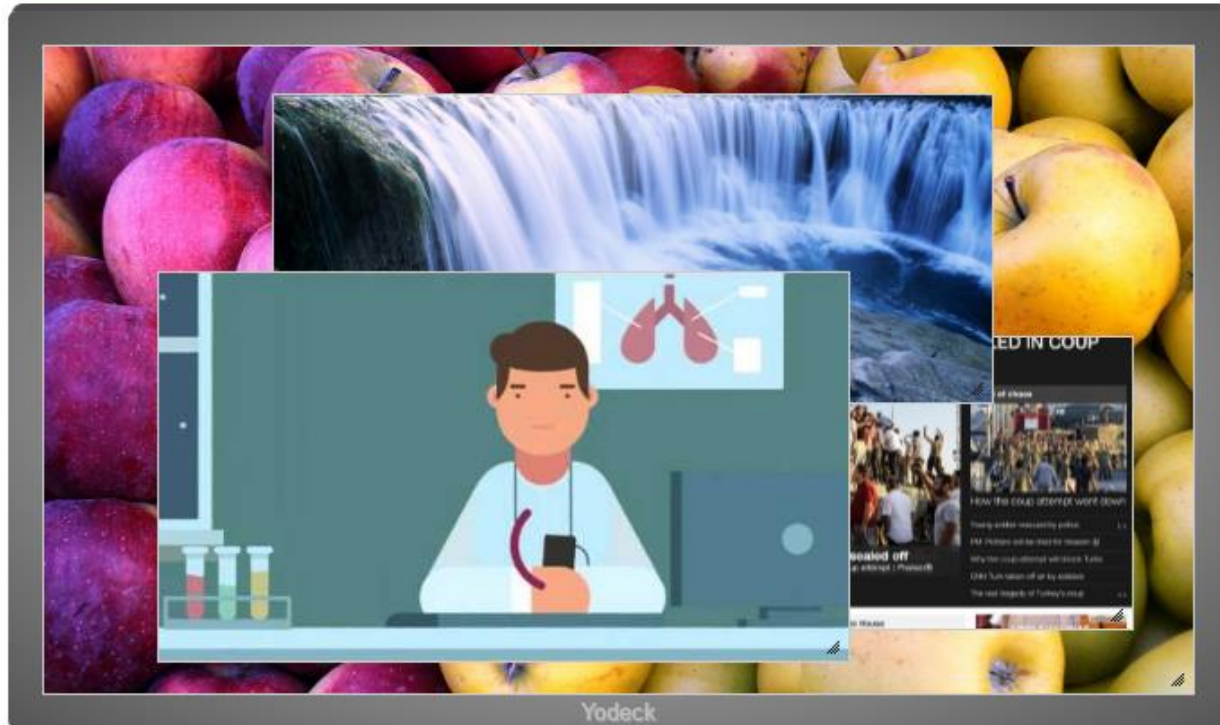
Company Presentation-1	⚙	✕
Beacon_stats	⚙	✕
Photo_Slideshow	⚙	✕
Weerbericht-1	⚙	✕
Citymesh_twitter_feed	⚙	✕
Citymesh_logo_white	⚙	✕
Touring Mobilis	⚙	✕
News_Feed	⚙	✕
Date&Time-2	⚙	✕

Layout by Yodeck customer

## Actual Screenshot Live

Playlists
Media

16:9 + [Click to add layouts for other sizes or rotated monitors ?](#)



### Show Editor

Reference Resolution: 1920x1080

Enable Grid:  ON

Top: 0 Left: 0

Width: 0 Height: 0

Bottom Right: (0,0) Ratio:

### Layering (drag to sort)

☰	All Videos Playlist	↻ ⚙️ ✕
☑	Waterfalls	↻ ⚙️ ✕
☑	CNN website	⚙️ ✕
☑	All Front Images	↻ ⚙️ ✕

Easy, Visual, Drag-n-Drop Layout Editor

# Features

- Schedule
  - Add multiple Content entries
  - Define when content is used
  - Setup priority for overlapping entries
  - Turn TV on/off
- System configuration
  - Ethernet/WiFi/4G Configuration
  - HTTP Proxies Authentication
  - Any Resolution or Aspect Ratio
  - Vertical + Horizontal Screens

Navigation: < > today November 2015 month week day

Sun	Mon	Tue	Wed	Thu	Fri	Sat
1 12a Simple Show	2 12a Simple Show	3 12a Simple Show	4 12a Simple Show	5 12a Simple Show 3p FullScreen Show	6 12a Simple Show 3p FullScreen Show	7 12a Simple Show 3p FullScreen Show
8 12a Simple Show 3p FullScreen Show	9 12a Simple Show	10 12a Simple Show	11 12a Simple Show	12 12a Simple Show	13 12a Simple Show 9p Turned Off	14 12a Simple Show
15 12a Simple Show	16 12a Simple Show	17 12a Simple Show	18 12a Simple Show	19 12a Simple Show	20 12a Simple Show	21 12a Simple Show
22 12a Simple Show	23 12a Simple Show	24 12a Simple Show	25 12a Simple Show	26 12a Simple Show	27 12a Simple Show	28 12a Simple Show
29 12a Simple Show	30 12a Simple Show	1 12a Simple Show	2 12a Simple Show	3 12a Simple Show	4 12a Simple Show	5 12a Simple Show
6 12a Simple Show	7 12a Simple Show	8 12a Simple Show	9 12a Simple Show	10 12a Simple Show	11 12a Simple Show	12 12a Simple Show



# Enterprise Security Features

- Workspaces
  - Granular access control
  - Create virtual spaces for content items and players
  - Assign Users with Roles (access rights) on Workspaces
  - Allow for having multiple Content Managers across sites, with flexible hierarchies
  - Ideal for multi-site installations or multinational corporations

Home > Schedules

Active Workspace: All | Welcome, Demo User

Show 10 schedules

<input type="checkbox"/>	Name	Last Changed	
<input type="checkbox"/>	Play "Fish Tank Demo" Show for 24/7	Mar 9th, 2017 - 11:31	
<input type="checkbox"/>	Simple Show 9-to-5	Mar 9th, 2017 - 11:30	
<input type="checkbox"/>	Empty Schedule (plays default show)	Nov 22nd, 2016 - 14:10	
<input type="checkbox"/>	Simple 9-5, Closed 5-10	Nov 22nd, 2016 - 14:10	

Showing 1 to 4 of 4 schedules

+ Add Schedule | Delete

## Enterprise Security Features

- SSO using SAML
  - Connect to any SAML Identity Provider for Single Sign On
- Audit Logs
  - Searchable and downloadable activity logs for all Users
- Customizable Password Policy
  - Define password strength & expiration for all Users
- IP Address Restrictions
  - Restrict Users to logging in from authorized IP addresses

## Features

- Build a DIY Video Wall
  - Use any number of screens to build a Video Wall
  - Hardware Required:
    - 1 x "Master" Yodeck Player (*performs the playback*)
    - 1 x HDMI IP Video Streamer (*starting at \$36*)
    - 1 x Yodeck Player for each Screen
    - 1 x LAN Switch + 1 x Router



Actual Photo of a Video Wall powered by Yodeck

< > today

July 2016

month week day

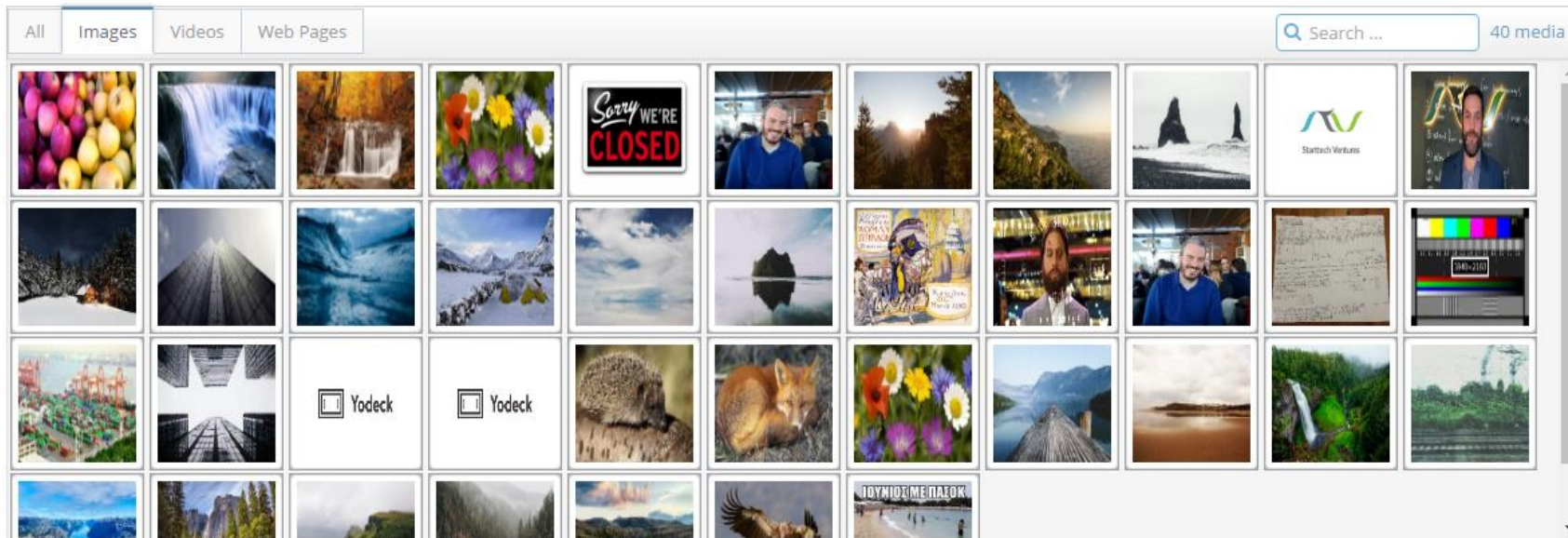
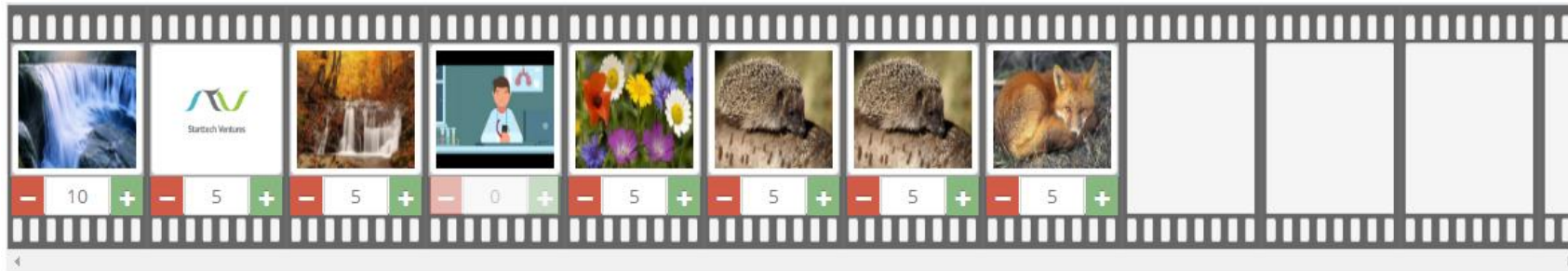
Sun	Mon	Tue	Wed	Thu	Fri	Sat
26 12a Simple Show	27 12a Simple Show	28 12a Simple Show	29 12a Simple Show	30 12a Simple Show	1 12a Simple Show	2 12a Simple Show
3 12a Simple Show	4 12a Simple Show	5 12a websockets test	6 12a Simple Show	7 12a Simple Show	8 12a Simple Show	9 12a Simple Show
10 12a Simple Show	11 12a Simple Show	12 12a websockets test	13 12a 4K	14 12a Simple Show	15 12a Simple Show	16 12a Simple Show
17 4K	18 12a Simple Show	19 12a Simple Show	20 12a Simple Show	21 12a Simple Show	22 12a Simple Show	23 12a Simple Show
24 12a Simple Show	25 12a Simple Show	26 12a Simple Show	27 12a Simple Show	28 12a Simple Show	29 12a Simple Show	30 12a Simple Show
31 12a Simple Show	1 12a Simple Show	2 12a Simple Show	3 12a Simple Show	4 12a Simple Show	5 12a Simple Show	6 12a Simple Show

Shows

- Turned Off
- FullScreen Show
- We Are Closed
- Simple Show
- Test 1080p - 480x192
- only videos show
- FC Test
- Test Excel-to-PPT
- 4K
- test url
- Demo Show
- test1
- websockets test
- test2
- Monitor's Default

# Human Content Scheduling

Playlist -drag from library to fill-



Drag-n-Drop Content on a Playlist Reel

## Yodeck Playbox

- Yodeck Playbox – Our Own Player
  - FREE on Annual Subscriptions
  - Based on Raspberry Pi 3 B+
  - Includes everything you need
  - Efficient (3W), credit-card size
  - Superb video playback
  - GPU-accelerated graphics
  - US and EU warehouse
- No Vendor Lock-in
  - Compatible, low risk



## NEC – Raspberry Pi Displays

- NEC Vxx4 & Pxx4 Series Displays
  - Raspberry Pi 3 Compute Module - NEC Edition
  - Identical hardware to Raspberry Pi 3, 100% Supported by Yodeck
  - Embedded Player solution
  - NEC Guarantee
  - Extra Cooling, Power control, External Watchdog, Display serial port access, and more



# Subscriptions

- Subscription fee per screen managed
- All Plans FREE for 1 screen
- 3 Plans, each adding more features
- Pay Annually and get ALL Players for FREE
- Custom Quotation for over 60 screens



Pay annually & get all players for free

Standard	RECOMMENDED Pro	Enterprise
<b>\$7<sup>.99</sup></b> per month for each screen	<b>\$9<sup>.99</sup></b> per month for each screen	<b>\$12<sup>.99</sup></b> per month for each screen
Typical usage for small & large organizations	Best for users with lots of content	Enterprise-grade security & control
Free for 1 screen	Free for 1 screen	Free for 1 screen
Upload Image, Video, Audio, Document Files	<b>EVERYTHING IN "STANDARD"</b>	<b>EVERYTHING IN "PRO"</b>
Use Live Streams and Web Pages	+	+
Playlists	Sub-Playlists	Granular Access Control with Workspaces
Split screen to zones/regions	Tag-based Playlists	Custom User Roles
Overlays	Playback Reports (Proof of Play)	Single Sign-on (SAML)
Scheduling		Login IP & Password Restrictions

## More than 60 screens?

Yodeck supports managing hundreds or thousands of screens. We provide special pricing for large volumes.



# Used at:



## Other Useful Features (1/2)

- Scripting Engine: can run custom automation code on Web Pages, useful for login forms, navigation and page modification
- Playback Reports (Proof of Play): download a daily, weekly or monthly CSV report detailing all confirmed playback
- Chromium Support: great HTML standards support
- Seamless Transitions: no black between content, (optionally) instant transition from video to video
- HDMI-in Support: support HDMI-to-Ethernet streaming adapters (\$35) for displaying synced video from an HDMI-capable source

## Other Useful Features (2/2)

- Monitor Tags: Tag-based bulk Monitor Management feature makes managing 1000s of Players easy
- Location Grouping: map with Players for easy overview
- User Management: Multiple Users with Roles
- Remotely Reboot/Shutdown Player, remotely command screens to power on/off
- 4K Support: Players partially support 4K screens (currently deployed on Samsung 4K TVs), great for crisp text content
- Backend API: RESTful HTTP API (unpublished but available)

## Features Coming Up Soon

- More Player Commands: Show Diagnostics, Full-size Screenshot
- Synced Playlists: synced playback across Playlists and Players
- Sub-Playlist Partial Playback: Play X items or Y seconds from a Sub-Playlist
- HTML5 Player to be used in browsers and more hardware support



**yodeck**

[info@yodeck.com](mailto:info@yodeck.com)

Flipnode LLC – 315 Montgomery Str., 9<sup>th</sup> Floor,  
San Francisco, CA 94104, USA

<http://yodeck.com>

R&D Center: Likourgou 1, 1<sup>st</sup> floor,  
Athens 10551, Greece